



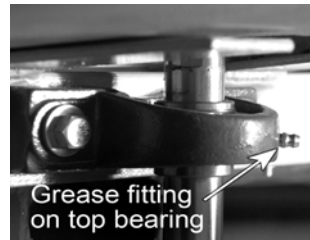
Lockerbie Kickwheels

Manufactured by the
Laguna Clay Company
1-800-452-4862

Thank you for purchasing
a quality **K or EK Lockerbie** product!

Basic Lubrication: Keep your wheel turning for years to come by repeating the following procedures every 4 months for wheels kept outside, every 6 months for heavy (schools, public studios, production) usage wheels and yearly for wheels in normal service.

Top Bearing: Apply a multi-purpose grease
a grease gun with a nipple fitting. Laguna
recommends #70614,
Lubrimatic or equivalent.



Bottom Bearing: Use a wrench to remove the access bolt just above the concrete flywheel
Insert one ounce of oil from the provided 2 ounce general lubricating



oil bottle, which arrived with your wheel. When finished, turn the bolt until just snug. Be careful, **DO NOT OVER TIGHTEN!!**
The bolt will strip if forced.
An oil can with a hose-nozzle or squirt bottle is required to insert oil. Laguna recommends: Husky, Keystone, 3-in-One, or equivalent.



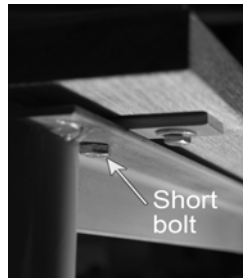
Seat Adjustments:

Up and Down Adjustments:

Loosen L bolts mounted to seat frame.
Pull up or push down to adjust the height
Tighten the bolts.
To loosen a seat stuck in one position Use penetrating solvent around the joint.
Laguna recommends: WD-40, Gunk, or Liquid Wrench-Super Lubricant.



Forward/Backward Adjustment:



Remove the two short bolts and reposition in seat bar for slight adjustments. Remove short bolts and rotate seat 180 degrees for a large adjustment. Always tighten carefully to avoid injury.

Tilt Adjustment: The tilt adjustment bolts screw up against the seat bars to level or slant the wooden seat.

